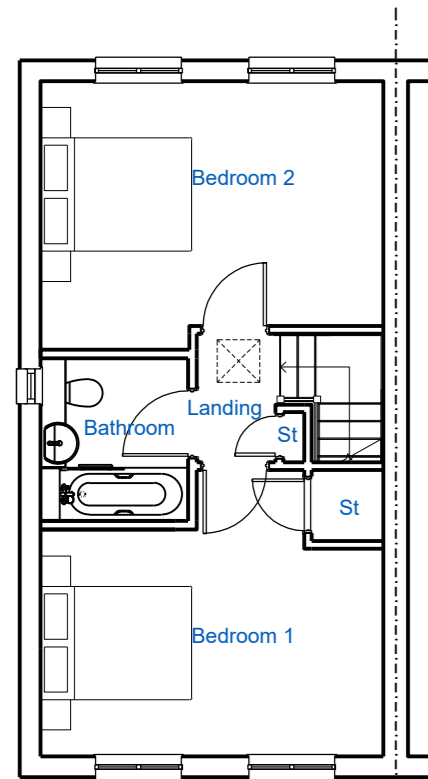


This drawing is the copyright of Roberts Limbrick Ltd and should not be reproduced in whole or in part or used in any manner whatsoever without their written permission.

Do Not scale off this drawing, use only figured dimensions and report any discrepancies or omissions to the Architect immediately.

rev.	date	description
A	18/06/21	Plots 63, 64 & 65 shown as 30 degree roof variant of Opt 2.

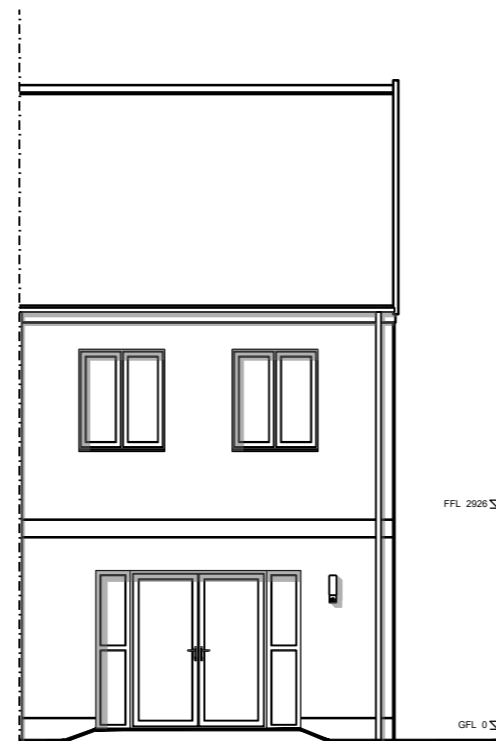


FIRST FLOOR PLAN



**FRONT ELEVATION
OP1 - 30° roof**

Plots 13, 14, 15, 49, 50, 51, 122, 123 Only

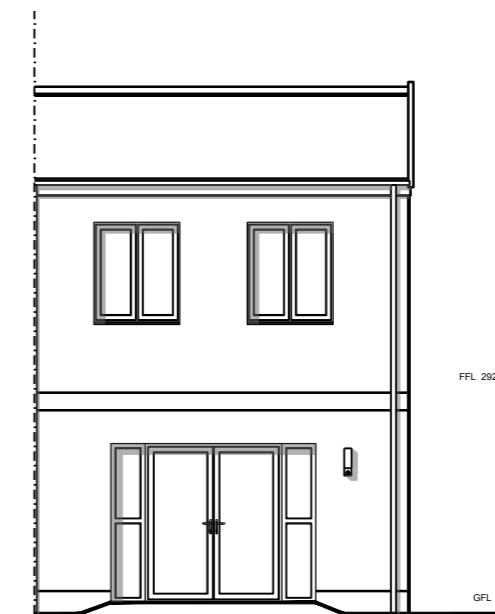


REAR ELEVATION

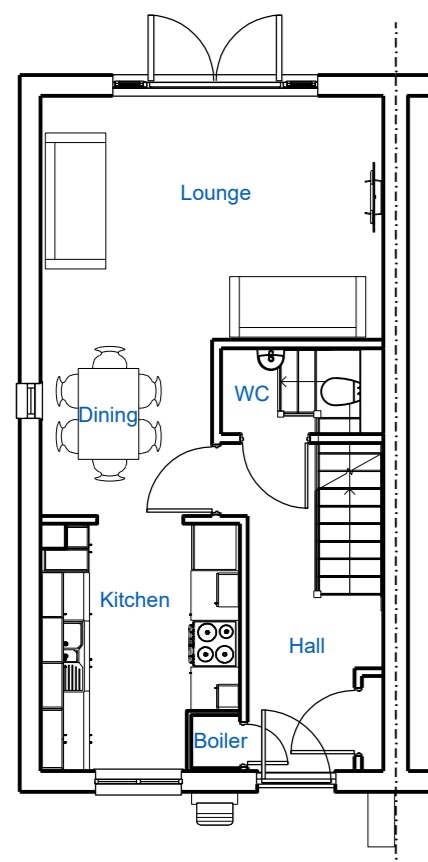


**FRONT ELEVATION
OP 2 - 12.5° roof**

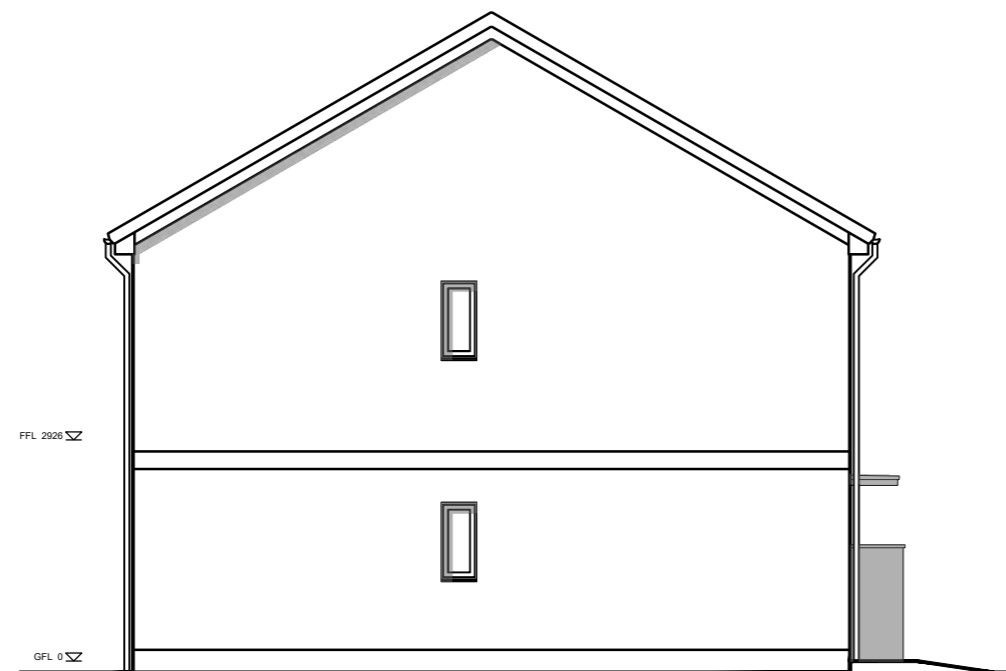
Plots 42, 43, 44 to have 12.5° roof.
Plots 22, 23, 24, 46, 47, 63, 64, 65, 110, 111, 112 to have 30° roof.



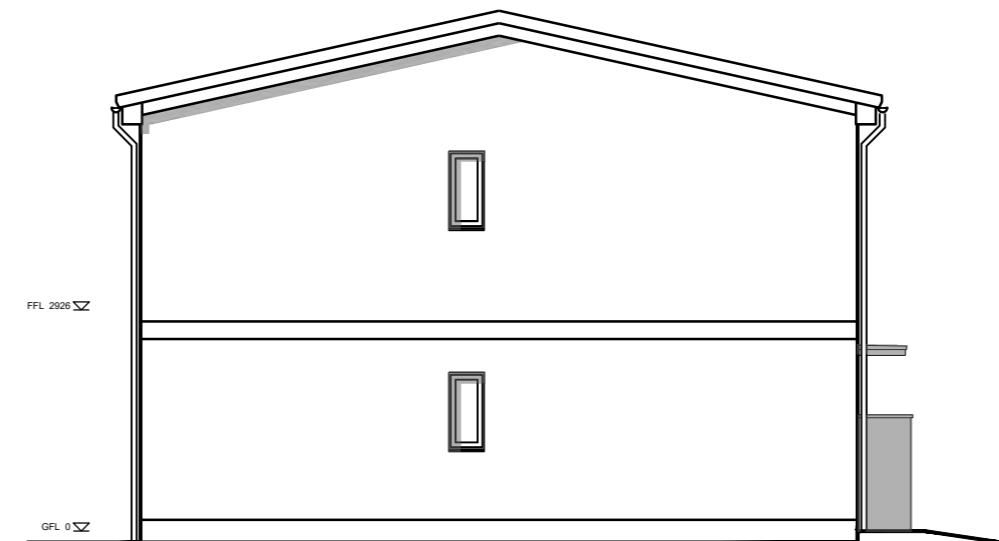
REAR ELEVATION



GROUND FLOOR PLAN



**SIDE ELEVATION
OP1 - 30° roof**



**SIDE ELEVATION
OP 2 - 12.5° roof**

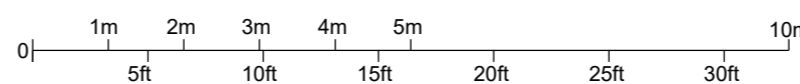
PLOTS

As Drawn: 14, 15, 22, 23, 43, 44, 47, 50, 51, 64, 65, 111, 112, 122
Handed: 13, 24, 42, 46, 48, 63, 110, 123

MATERIALS LEGEND

- Roof Tiles - 30 degree roof pitch - Marley Modern Interlocking Concrete Tiles
- Roof Tiles - 12.5 degree roof pitch - Metrotile Slate .900 Lightweight Steel Roofing - Terracotta
- Brick Units
- Main Brick GF - Red Multi Brick
- Main Brick FF/SF - Red Multi, Buff of Brown Brick
- Brick Detail & Banding - Red Multi or Buff Brick
- Render units
- Main Render - EPSITECH Render (0505B206).
- Brick Detail & Banding - Red Multi
- Window Surrounds - Grey Aluminum or similar
- Brick below DPC - Red Multi Brick
- Rainwater Goods - Black uPVC
- Front Doors - Vista Panels Verona style, colour: mixed colours - Olive Green, Navy Blue, Maroon Red etc
- Window & Door Frames - Grey uPVC
- Front Door Canopies - Flat GRP Dark Grey
- Soffit & Fascia - Grey uPVC

Refer to Materials Plan for details



project

RESIDENTIAL DEVELOPMENT
FOSSETTS WAY
SOUTHEND-ON-SEA

client

ILKE HOMES

drawing

HOUSETYPE - HOLT
PLANS & ELEVATIONS
Sheet 1

status

PLANNING

ROBERTS LIMBRICK LTD

The Carriage Building, Bruton Way,
Gloucester, GL1 1DG
The Estates Office, 25 - 26 Gold Tops,
Newport, NP20 4PG

T. 03333 405 500
mail@robertslimbrick.com
www.robertslimbrick.com

Registered Office : England No. 06658029

scale 1/100 @ A2

date 26/03/21 **author** RJ

project	drg no.	rev.
9913	PL22	A